

## Artwork specifications for Sound Cards

The following information should be adhered to when preparing your artwork for print production.

**DOCUMENT SIZE:** 508mm (W) x 177.8mm (H)

4 panels each 127mm wide with bleed of 3mm if background colour or image extends to edge of card.

Any images or graphics within your artwork should be as tiff or eps, minimum 300dpi.

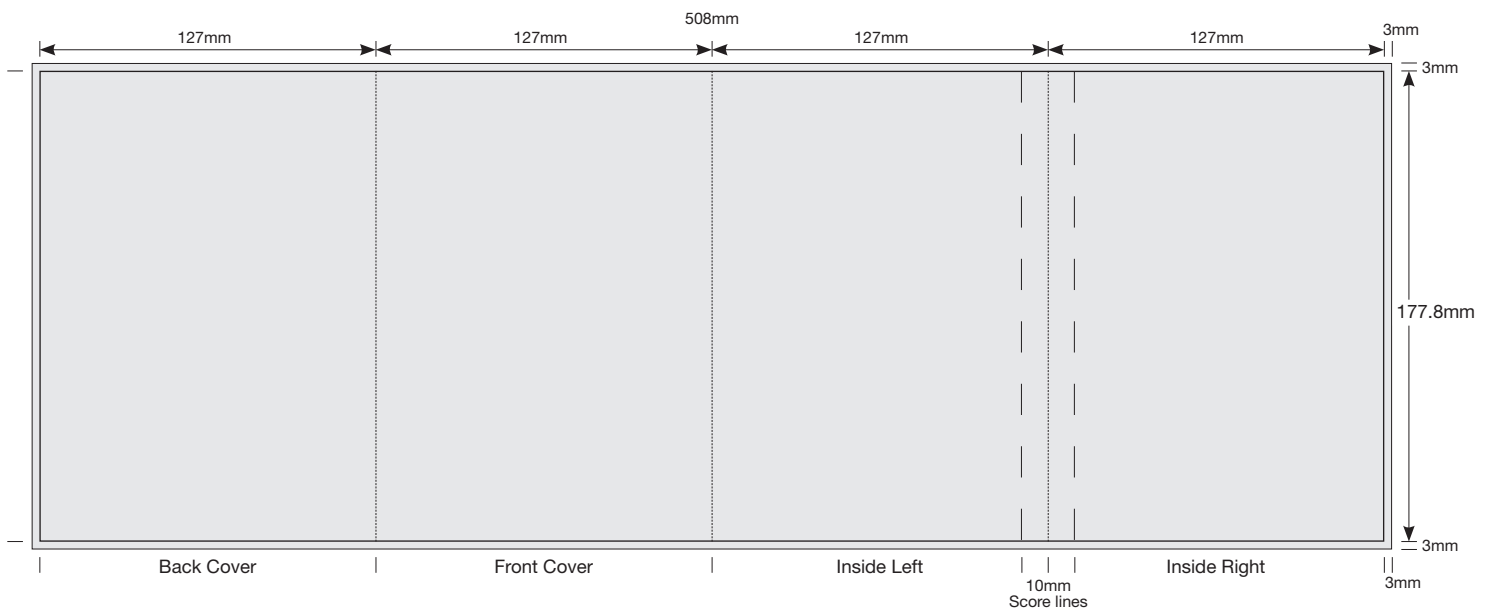
Mono line drawings/art as bitmap at 1200dpi.

Please include trim marks (as registration)

**PRINT COLOURS:** 4 colour process (CMYK). Do not supply as RGB.

**SUPPLYING FILES:** PDF in high-res (Print Quality) with all fonts converted to outlines/paths.

The following file formats are NOT acceptable: gif, png, Corel Draw, Microsoft Word, Powerpoint or Publisher.



Setup shown at 35% of actual size